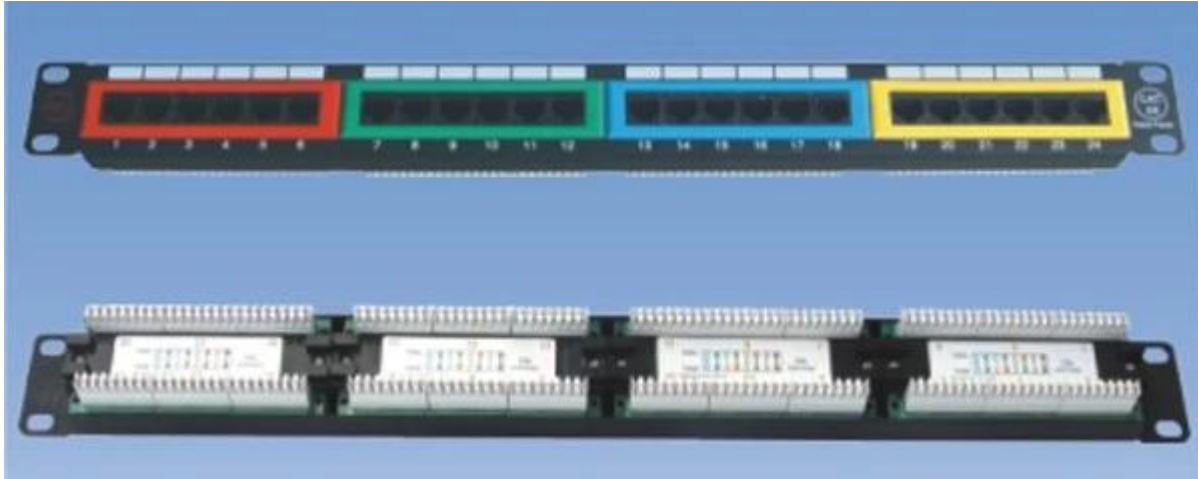


Cat5e Cat6

GJ-16



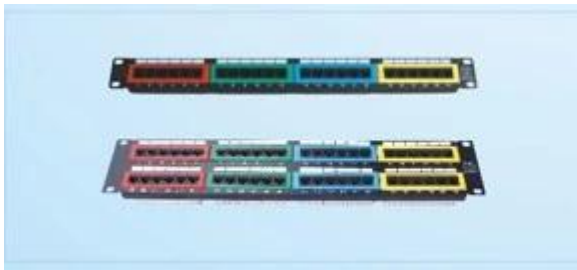
Features

- 1. EIA 19 inch standard 1U
- 2. High performance RJ45 ports
- 3. High density RJ45 ports
- 4. High performance RJ45 ports with PCB reinforcement
- 5. 12, 18, 24, 36, 48 ports CAT5e
- 6. OEM & ODM
- 7. RoHS & CE

OEM & ODM

Series

- 12 ports GJ-16-128-C5E / C6
- 18 ports GJ-16-188-C5E / C6
- 24 ports GJ-16-248-C5E / C6
- 36 ports GJ-16-368-C5E / C6
- 48 ports GJ-16-488-C5E / C6



Item NO.	Port	Block
XJY-GJ-16-128-C5E/C6	12	110/Dual/Krone
XJY-GJ-16-188-C5E/C6	18	110/Dual/Krone
XJY-GJ-16-248-C5E/C6	24	110/Dual/Krone
XJY-GJ-16-368-C5E/C6	36	110/Dual/Krone
XJY-GJ-16-488-C5E/C6	48	110/Dual/Krone

Dimensions

- * 1U / PE
- * 50mm x 55mm x 22mm x 28mm

Why Choose US :

Our goal is to provide customers products of high quality, competitive price, and superior services.

1. Established in 2005, about 10 years of history;
2. Own main factories, supply diversification products and One stop service
3. Certificates of ISO9001, UL, CE, EMC, CQC, RoHS, Reach, etc.
4. Six years Gold member in Alibaba, Aliexpress etc
5. Production capability more than 100 thousands pcs/ month;
6. Monthly export more than 50 times delivery;
7. Exported to more than 20 countries and regions;
8. We provide an excellent combination between prices, quality & respond, delivery, after-sales!

Order program

Selectech



send us inquiry



receive our quotation



negotiate details



mass production



sign contract / deposit



confirm the sample



cargo ready



balance / delivery



further cooperation