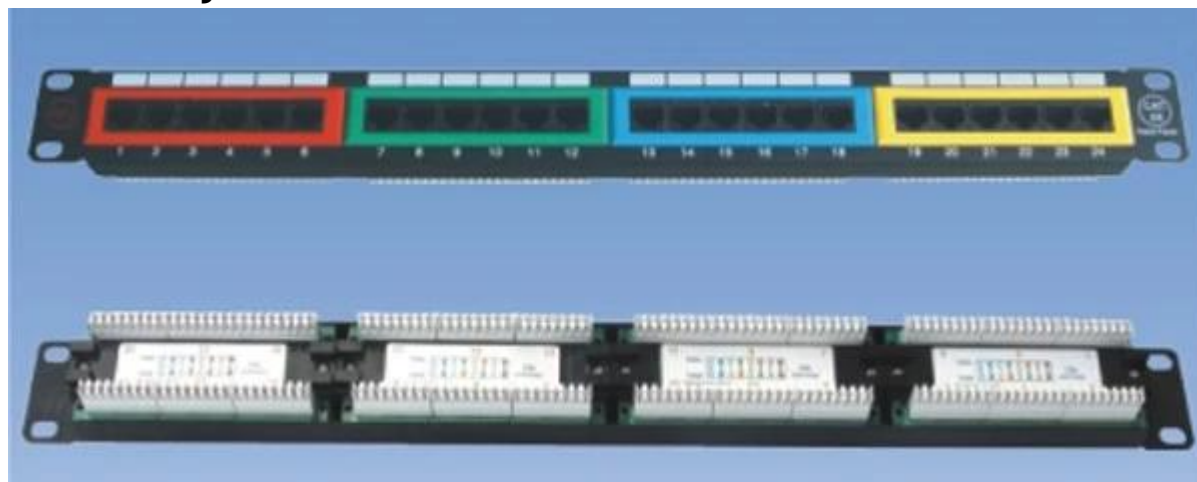


Cat5e Cat6 Patch Panel with Identification Numbers and color label

Part No: GJ-16



Product Features:

1. Matches with EIA standard 19-inch rack
2. Each port is screen-printed with identification numbers
3. Port can be installed easily on the reserved writable area
4. The loaded patch panels are assembled with keystone jacks which are soldered directly on PCB to shorten the space needed by each jack
5. 12,18,24,36,48 ports Cat5e patch panel are available.
6. OEM & ODM
7. RoHS, CE

Specs& Description:

Part Sries

12 ports	GJ-16-128-C5e/C6
18 ports	GJ-16-188-C5e/C6
24 ports	GJ-16-248-C5e/C6
36 ports	GJ-16-368-C5e/C6
48 ports	GJ-16-488-C5e/C6



Item NO.	Port	Block
XJY-GJ-16-128-C5E/C6	12	110/Dual/Krone
XJY-GJ-16-188-C5E/C6	18	110/Dual/Krone
XJY-GJ-16-248-C5E/C6	24	110/Dual/Krone
XJY-GJ-16-368-C5E/C6	36	110/Dual/Krone
XJY-GJ-16-488-C5E/C6	48	110/Dual/Krone

Product Packaging:

- * 1 pcs/PE bag
- * 50 pcs/Carton: 55*22*28 cm

Why Choose US :

Our goal is to provide customers products of high quality, competitive price, and superior services.

- 1.Established in 2005, about 10 years of history;
- 2.Own main factories, supply diversification products and One stop service
- 3.Certificates of ISO9001, UL, CE, EMC,CQC,RoHS,Reach,etc.
- 4.Six years Gold member in Alibaba, Aliexpress etc
- 5.Production capability more than 100 thousands pcs/ month;
- 6.Monthly export more than 50 times delivery;
- 7.Exported to more than 20 countries and regions;
- 8.We provide an excellent combination between prices, quality & respond,delivery,after-sales!

Order program

Selectech



send us inquiry



receive our quotation



negotiate details



mass production



sign contract / deposit



confirm the sample



cargo ready



balance / delivery



further cooperation