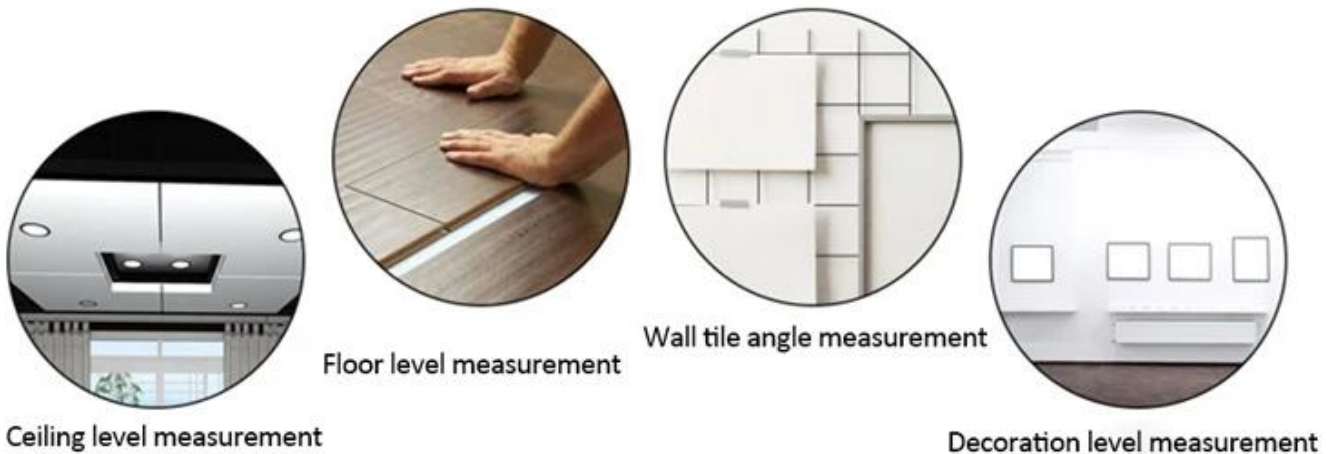


Backlight Lcd Display Aluminum Digital Angle Ruler Meter function Precision Accuracy
Digital Angle Finder



Features:

- 1.Measuring Range and High Accuracy: With 0-230° of measuring range, 0.1° of increment, $\pm 0.5^\circ$ (9mm/m) of accuracy, allow you to measure angle precisely and quickly.
- 2.Mitre Gauge Function: It is also used as a mitre angle calculator, transfers the mitre angle for your mitre/slide saw.
- 3.Distinct LCD Digital Display: With blue back-light screen, able to read the data clearly even under dark circumstance.
- 4.Readout Frozen and Auto Power Off: The hold function of readout offers you great convenience when working. After 5 minutes of no operation, the unit would power off automatically, for extending the battery life.
- 5.High Quality Material: Made of aluminum, which is strong and durable.

6.Easy Operation and Wide Applications: As a quick protractor , is an ideal DIY tool for remodeling houses, door andWindows installation and much more.

Product Description



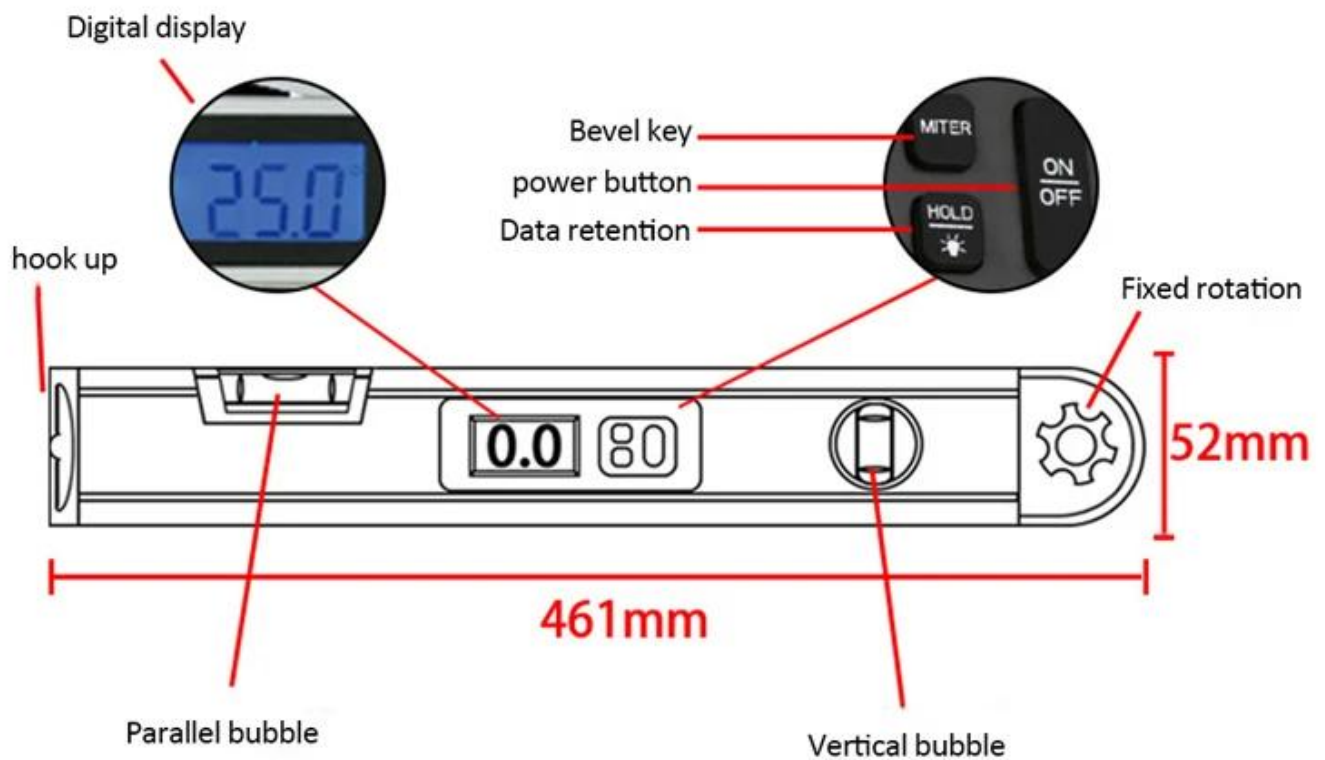


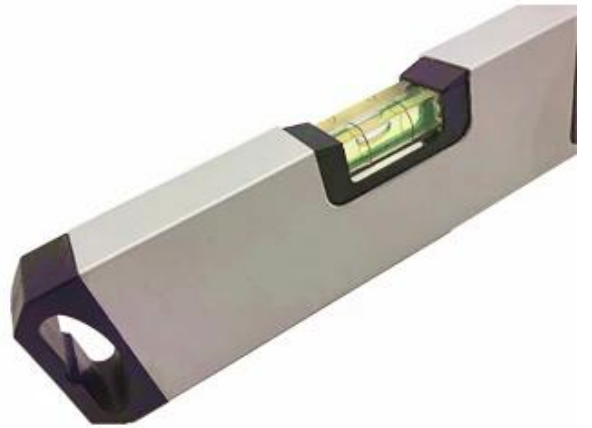


Digital goniometer



Product parameters





Digital goniometer











Specification

item	value
Model Number	ST99GN
Length	400mm
Measuring angle range	0°-230°
Increase/decrease angle	0.1°
Working temperature	-10C~50C
Battery	9V6F22
Measuring precision	±0.5°C
Horizontal and Vertical Measuring	Yes
Angle guide	Yes
LCD Display	Yes
Material	Aluminum Alloy

Packing & Delivery



Item Size: 46x5x2.3cm (18.1x2.0x2.3in)

Item Weight: 420g(14.8oz)

COMPANY INFORMATION

• SELECTECH •

About us



✓ Quality



✓ Experience



✓ Service



✓ Produce



Selectech Electronics Co.,Ltd

- Welcome to ShenZhen Selectech Electronics Co., Limited. -- Your power sourcing for smart home and home health&beauty care products, consumer electronics, plastics products! Selectech is 11 years gold supplier in alibaba with trade assurance.



Office room



Team picture (1)



Team picture (2)

- Selectech was founded in Shenzhen in year 2005. Selectech invested factories focuses on production and R&D for smart home, home health care Otoscope&Camera,home consumer electronics. like Alexa Echo Google home control WiFi smart socket plug, USB charger wall socket receptable,smart fast wall charger, universal travel adapter,ENT otoscope,oral camera, USB&Wireless microscope and endoscope,DLP projector,baby monitor ect.

Our factory



- Welcome to visit our website and factory to know more. We can supply the mould, R&D, custom and OEM/ODM service as per your request! Over 16 years Experiences in manufacturing & business, support customers with good service of rich experience which will save customer's working time to meet win-win!

Professional manufacturer



WELCOME TO ORDER



- Our aim is: "Top quality, Customer benefit firstly". Our company is based on "Credibility", aimed at "Win-Win" and took "service" as bounden duty. All products are strictly followed ISO9001:2008 and met CE, BSI, FCC, UL and RoHS standard.

Production process



Customer photoes

- Selectech Electronics is constantly improving itself at the spirit of building brand products and striding towards diversity and scale. Selectech has its own experienced technology engineers, modern management team, strong technical strength, advanced injection and testing machines and perfect quality control system to guarantee the quality, security and punctuality of delivery.



- Looking forward to cooperating with you!
Selectech is your reliable and the best partner to start your business!

Certificate



Our advantages

Why choose us



16 years OEM&ODM experience.



Custom-made products and packing as per customer's request.



Supply free cost samples.



All goods must be passed QA, QC, FQC inspect and test.



Quickly delivery time. Small qty have stock, Lots qty, it's about 20-25days.



We can supply drop shipping, cheapest and economic Express shipment.



We can collect all goods to ship for our customers.



Supply after-sales and quality guarantee service.



With FCC, CE, ETL, ROHS quality certification.



With ISO9001 Quality management system.



FAQ

1.Can I visit your factory?

Yes, of course you are warmly welcomed to visit our factory. Please inform us in advance.

2. Which payments are acceptable?

We accept T/T, Paypal, Western Union. Escrow, Trade Assurance ect.

3. How fast can I get the quotation?

We usually quote within 24 hours after we get your inquiry. If you are very urgent to get the price, please call us or tell us in your email so that we will regard your inquiry priority.

4.Can you do the design for us?

Yes. We have a professional team having rich experience in USB wall socket and other smart home electronic design and manufacturing. Just tell us your ideas and we will help to carry out your ideas into perfect electronic products. It does not matter if you do not have someone to complete files. Send us high resolution images, your Logo and text and tell us how you would like to arrange them. We will send you finished files for confirmation.

5.What is your terms of delivery?

We accept EXW, FOB, CIF, etc. You can choose the one which is the most convenient or cost effective for you.

6.What about the lead time for mass production?

Honestly, it depends on the order quantity and the season you place the order. The lead time of 500pcs is about 8 working days.

Generally speaking, we suggest that you start inquiry two months before the date you would like to get the products at your country.

7.Can I place sample or small trial order?

Yes, sample order is welcomed for checking product functionality and quality. We also accept small trial order for customer to research their local marketplace.

8. Do your company accept customization service?

OEM/ODM is welcome. We have own factory and excellent design teams, supplying mold tooling and R&D, customize packing, color, logo ect. service.