

## Product Display

---



4.3 Inch



8mm



2600 mAh



1080P





Model No. and color:

SE-P40 (8mm dual lens with 2m cable, green color) SE-P40 (5.5mm single lens with 2m cable, blue color)  
SE-P40 (8mm single lens with 2m cable, orange color) SE-P40 (3.9mm single lens with 2m cable, red color)

## Product Features

### Features

Industrial endoscope with pistol grip and pivoting 4.3-inch compact screen can be used for a mechanical inspection, car repair, plumbing fixes, electrical installs, house DIY, wall upgrades, HVAC maintenance, and more. It is an excellent tool for conducting non-invasive inspections of small areas, like looking in

the combustion chamber of an engine through the spark plug hole or the inside of a wall without damaging the drywall.

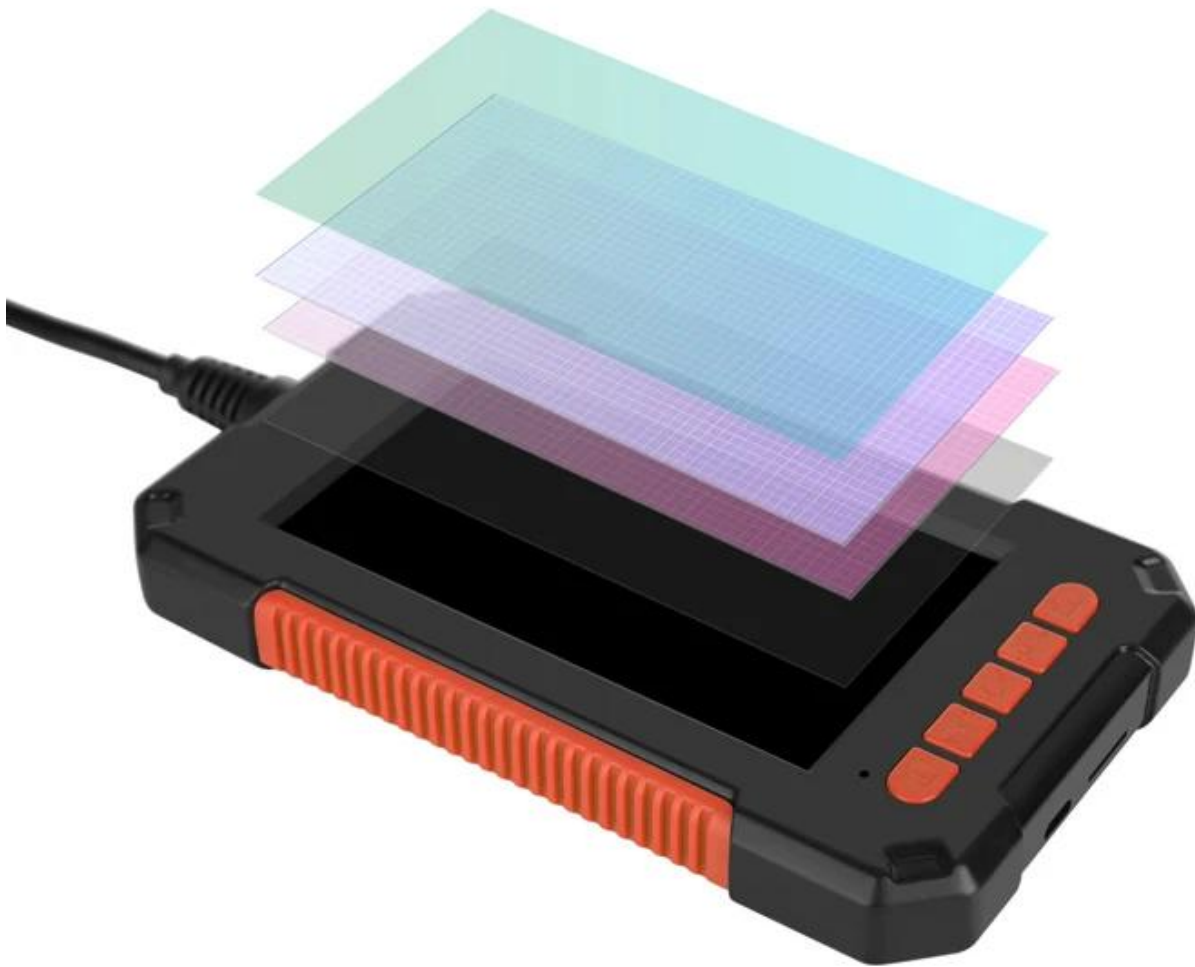
**Warmly tips:** We have 8mm or 5.5mm or 3.9mm lens camera available, if you buy, pls remark which size camera will you need? If you don't contact with us, our default choice is 8mm single camera to delivery.

- \* 4.3-inch full-color LCD screen for real-time viewing of test videos.
- \* Resolution up to 1080P for image capture, video recording.
- \* TF card can be installed to achieve file storage function.
- \* 8mm high-sensitivity waterproof lens with clear image quality for different working environments.
- \* The auxiliary light source, 8 adjustable LED lights for easy use in dark environments.
- \* [Plug and Play]: Easy to operate, you can use it immediately when it is powered on. No need to use your smartphone to connect the WIFI and no need to download any driver software. So you do not need to worry about dirtying your expensive phone at work too.
- \* [1080P and compact Screen]: 1080P HD Endoscope camera with a 4.3 inch color LCD screen that allows you more convenient to perform live analysis on your application area and to view HD photos and videos instantly. More clearly and troubleshoot the problem effectively.
- \* [High-quality Snake Camera]: IP68 waterproof, 8 adjustable LED lights to ensure a clear image even under dark conditions. Long focal distance (1.6 inch-198 inch) making inspections easier. 2M Semi-Rigid cable is both stiff and flexible. Rechargeable battery, a full charge can work up to 4-5 hours.
- \* [Wide Application]: SELECTECH industrial Endoscope is excellent for inspection in pipes or areas which are not viewable by the naked eye. It is widely used in fields such as car maintaining, mechanical inspection, pipe repair, household appliance inspection, house maintenance, wall structure inspection, and sewer/ drain inspection, etc.
- \* [What You Will Get]: SELECTECH inspection camera package contents: LCD digital endoscope, user manual, USB data cable, and set accessories (include a hook, magnet, protective cap).

## Specification

item	1080P inspection 8mm waterproof camera endoscope
Customized support	OEM, ODM
Model Number	SE-P40 (8mm single lens with 2m cable, orange color) SE-P40 (8mm dual lens with 2m cable, green color) SE-P40 (5.5mm single lens with 2m cable, blue color) SE-P40 (3.9mm single lens with 2m cable, red color)
Special Features:	NIGHT VISION(8 IR LED)
Sensor:	CMOS
Cable:	2 meter hard wire □ optional 5/10 meter hard wire □
Display:	4.3 inch HD IPS color LCD screen
Function:	sewer/ drain inspection, car maintaining, mechanical inspection & repair
Video Compression Format:	MJPEG
Data Storage Options:	Memory Card
Application:	Indoor, Outdoo
Resolution:	1920x1080, 2MP
Certification:	ce, FCC, ROHS
Waterproof:	IP68
Lens	8mm (optional 5.5mm, 3.9mm lens)
Horizontal viewing angle	70°
Language:	11 kinds of languages
Battery	2600Mah
Working time:	4-5 Hour
Package contents:	LCD digital endoscope, user manual, USB data cable, and set accessories (include a hook, magnet, replacement buckle, and side mirror)

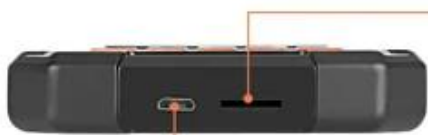
### **4.3 inch highlight screen**



# Function introduction



-  Menu
-  Up button/Light dimming
-  Power button/OK
-  Down button /Light dimming
-  Take photo/Recording



TF card slot

Charging inpute





# 2600mAh Battery

Working up to 3–5 hours









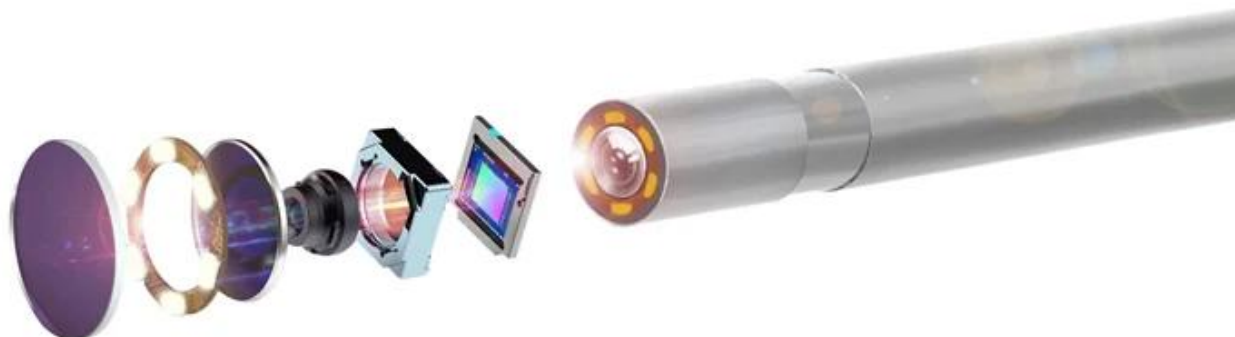
8 Adjustable LED lights



# ***The industry-standard chip***

***delivers realistic color and precise visual elevating your inspection experience.***

***6.Special technology with a focal length of 5 cm-500cm.***



5cm



500cm

**IP67 Waterproof**



# 3.9MM/5.5MM/8MM

Lens Easily face to various environments



Diameter: 3.9mm



Diameter: 5.5mm



Diameter: 8mm



A wide range of application scenarios:

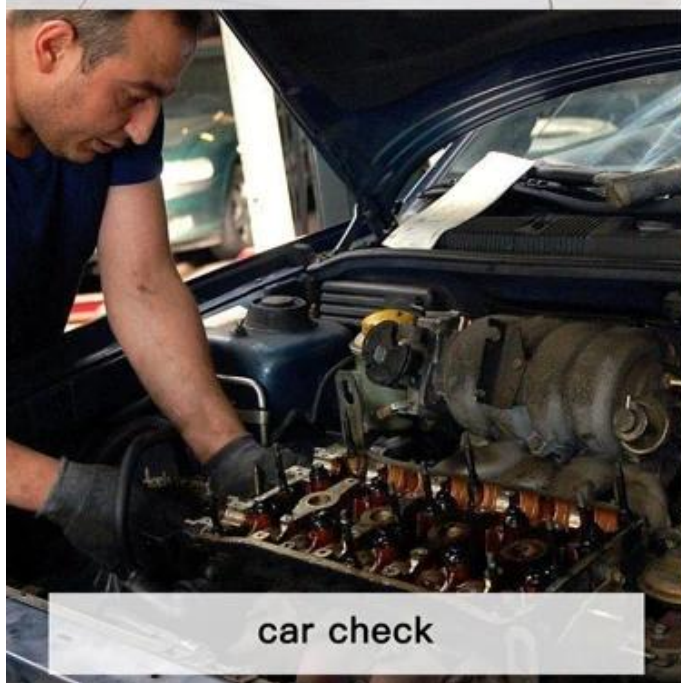




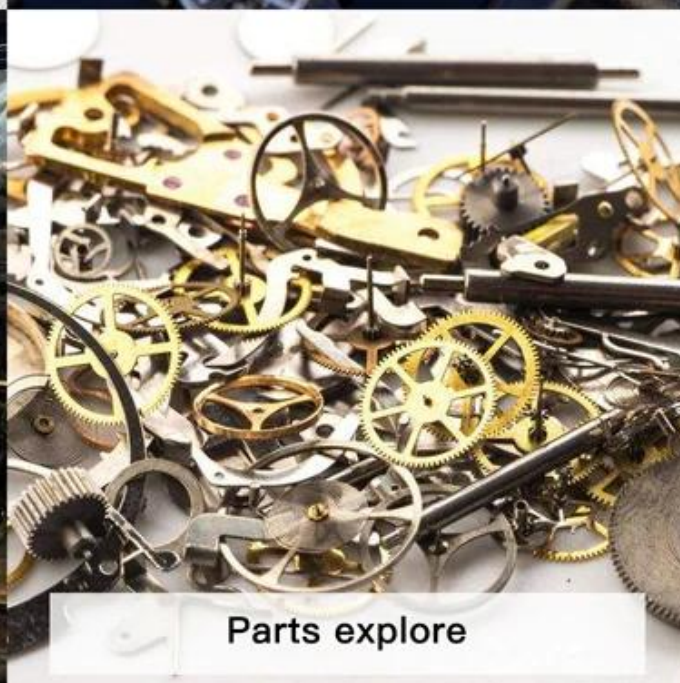
Household appliances testing



Pipeline inspection



car check



Parts explore





Product packaging

---



**Replacement buckle**

**Hook**



**Magnet**



**Side mirror**





#### Package contents:

LCD digital endoscope, user manual, USB data cable, and set accessories (include a hook, magnet, replacement buckle, and side mirror)

Packing:

CTN QTY : 40pcs/cn, 1pcs/box GW: 11.5 kgs N.W.: 10.5 kgs Size.: 47X38 X 38.5cm

Click to order online,  
There are free gifts and more  
surprises 7-Day Fast Dispatch



## COMPANY INFORMATION

• SELECTECH •

About us



✓ Quality



✓ Experience



✓ Service



✓ Produce



### Selectech Electronics Co.,Ltd

- Welcome to ShenZhen Selectech Electronics Co., Limited. -- Your power sourcing for smart home and home health&beauty care products, consumer electronics, plastics products! Selectech is 11 years gold supplier in alibaba with trade assurance.



Office room



Team picture (1)



Team picture (2)

- Selectech was founded in Shenzhen in year 2005. Selectech invested factories focuses on production and R&D for smart home, home health care Otoscope&Camera,home consumer electronics. like Alexa Echo Google home control WiFi smart socket plug, USB charger wall socket receptable,smart fast wall charger, universal travel adapter,ENT otoscope,oral camera, USB&Wireless microscope and endoscope,DLP projector,baby monitor ect.



## Our factory



- Welcome to visit our website and factory to know more. We can supply the mould, R&D, custom and OEM/ODM service as per your request! Over 16 years Experiences in manufacturing & business, support customers with good service of rich experience which will save customer's working time to meet win-win!

Professional manufacturer



WELCOME TO ORDER



- Our aim is: "Top quality, Customer benefit firstly". Our company is based on "Credibility", aimed at "Win-Win" and took "service" as bounden duty. All products are strictly followed ISO9001:2008 and met CE, BSI, FCC, UL and RoHS standard.

## Production process



## Customer photoes



- Selectech Electronics is constantly improving itself at the spirit of building brand products and striding towards diversity and scale. Selectech has its own experienced technology engineers, modern management team, strong technical strength, advanced injection and testing machines and perfect quality control system to guarantee the quality, security and punctuality of delivery.



- Looking forward to cooperating with you!  
Selectech is your reliable and the best partner to start your business!

## Certificate



## Our advantages



## Why choose us



16 years OEM&ODM experience.



Custom-made products and packing as per customer's request.



Supply free cost samples.



All goods must be passed QA, QC, FQC inspect and test.



Quickly delivery time. Small qty have stock, Lots qty, it's about 20-25days.



We can supply drop shipping, cheapest and economic Express shipment.



We can collect all goods to ship for our customers.



Supply after-sales and quality guarantee service.



With FCC, CE, ETL, ROHS quality certification.



With ISO9001 Quality management system.



